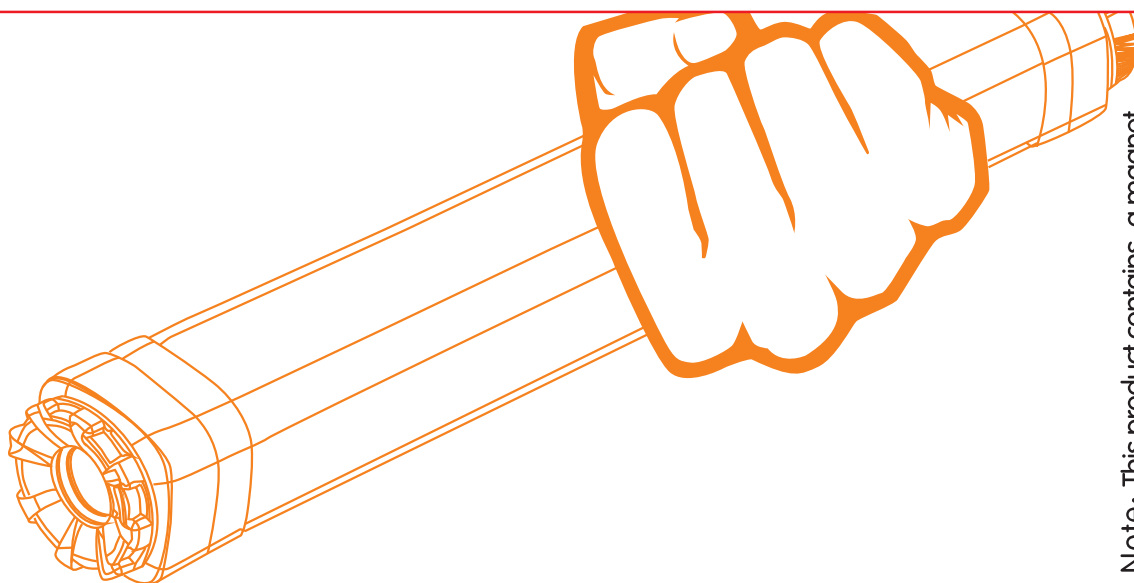


Outdoor waterproof LEDlamp  
Power Bank+Flashlight+Emergency lamp

## PRODUCT LIFE TIME

Art NO	Battery Capacity	High light	Soft light	moderate light	Mosquito lighting	Red/blue alternately	Flashlight	Maximum rated power	Electrical parameters	Luminous flux	remarks
160(mm)	2600mAH	8H	30H	20H	20H	30H	20H	3W	In:5v Out:5v 1A	160lm	routine
250(mm)	5200mAH	8H	30H	20H	20H	30H	20H	4W	In:5v Out:5v 1A	280lm	routine
300(mm)	7800mAH	8H	30H	20H	20H	30H	20H	5.5W	In:5v Out:5v 1A	380lm	routine



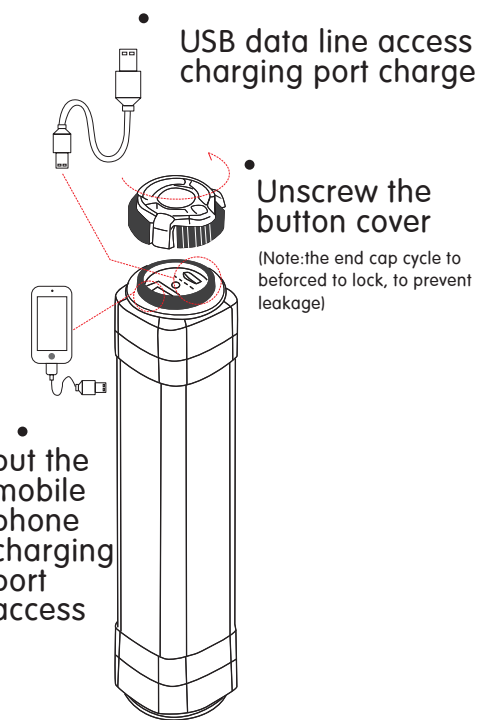
Note: This product contains a magnet, do not use the same medical or electronic equipment together, so as to avoid the possible set of damage caused.

# PRODUCT

## CHARGING / DISCHARGING GUIDE

Unscrew the button cover, USB data line access Micro USB charging/discharging port.

### Use demonstration



# PRODUCT

## FUNCTION CHARACTERISTIC

1、USB data line charging ,can be connected to the charger , Charging treasure or computer USB interface can charge, charge,Full of electricity can be used for more than 4 hours, the data line can also give the phone charging.

2、 Can be used as mobile phone,charging for mobile phone.

3、 With warning flash, real-time lighting bright, low light,flash and SOS signal for help 6 ways of use, 1switches,6 modes of free switching,often by close.

4、 Waterproof,waterproof performance of up to IP68



30 hours of working hours

5、 The design of magnet and lanyard,on the back , increasing the adsorption function convenient suspension;with a wall mounted portable hanging type, etc..



Waterproof IP68

6、 Equipped with M6 copper insert nut,can be fixed on a tripod, camera bracket



Mobile phone charging function

7、 There are strong flashlight flashlight function, can be irradiated in the long distance.



Magnetic adsorption function

8、 The product can suck ,couple lights, meaning extraordinary

9、 Electric quantity display indicator light function.

# PRODUCT

## CONTROL FUNCTION MODE

### ● Function description

Short press the switch mode,long press off, IC into sleep



# PRODUCT

## APPLICATION SCENARIOS



# PRODUCT

## ACCESSORIES DESCRIPTION

### Essential goods

- USB data line one
- Lanyard one
- Screw hanging ring one